

6 Houses

current +redux

RoTo Architects

Los Angeles

OAK PASS

A primary residence on a mountaintop overlooking the LA Basin for a three-generation family: two grandparents, two parents, and four children. They have three common interests, storytelling, agriculture, and tennis. A large concrete roof will "tent" a large open interior with three levels and four zones, one for each generation and one for all of them. The architecture is a 21st C. tribute to John Lautner, a 20th C. Master of Architecture.

Why?

The land was once the shape of a hilltop. It was reshaped to accommodate a house that was never built. Upon visiting the site and seeing the cut land, I reminisced seeing a similar site on a hilltop in the Silver Lake District of Los Angeles when I was a young boy. Mr. Lautner completed the hill once again with a large concrete curving roof - a concrete tent is how I always remembered it.

The Oak Pass is a re-imagined concrete tent with the bedrooms conceived as more cave-like spaces.

The tent is for the family in an active, creative mode and the caves are for the each of the family members to recenter and restore. There are three zones, one for each generation, and generous spaces for all family gatherings with friends. The parents have a vineyard for urban wine-making, the children have a farm to learn about the science of soil and plants and to be a part of the farmers market circuit, and the grandparents bridge both. Each generation has different architectural desires that span the familiarity of tradition and memory to the unfamiliarity of invention and action.



oak pass

residence for a 'garage vintner - farmer'



residence for a 'garage vintner - farmer'

oak pass



oak pass

residence for a 'garage vintner - farmer'



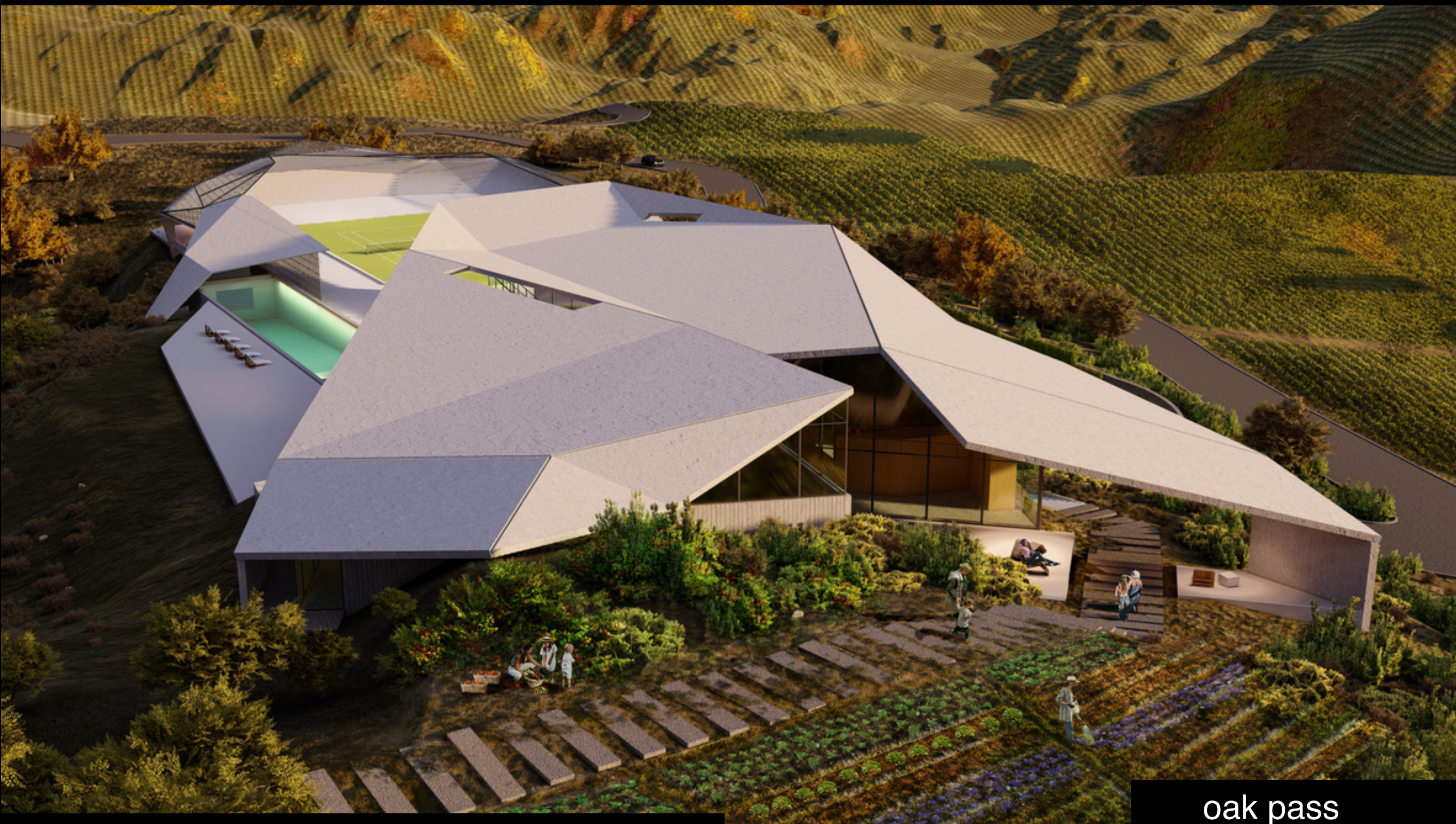


oak pass

residence for a 'garage vintner - farmer'

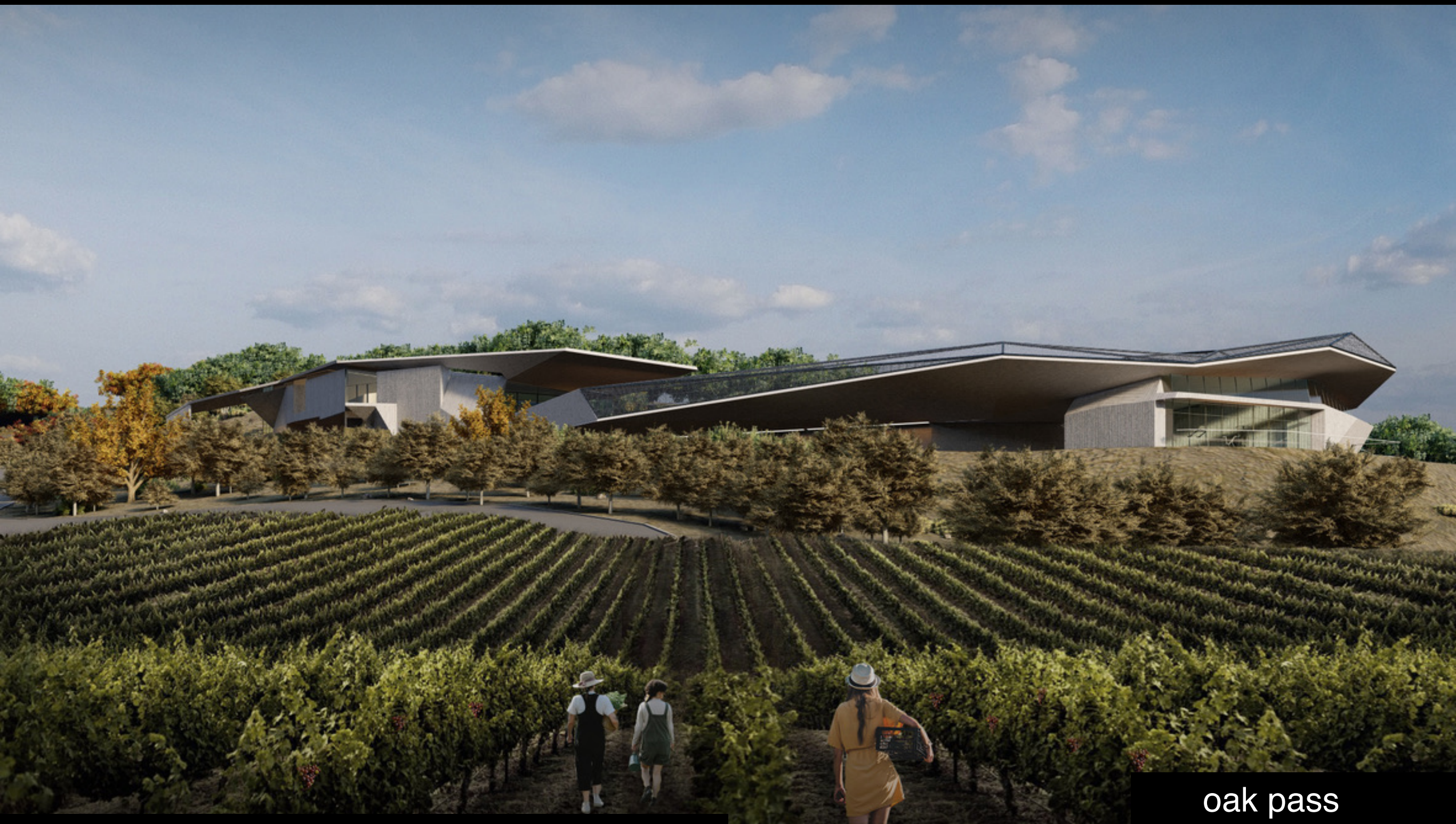






oak pass

residence for a 'garage vintner - farmer'



residence for a 'garage vintner - farmer'

oak pass

LOS GATOS

A modest house on a large sloping site (20 acres) that will serve the needs of the immediate family of four and periodic gatherings of extended family and friends for various communal conversations, gardening, cooking, and ecstatic spiritual dancing, inspired by Dervishes and Shakers. They requested one shed roof over open terraces.

Jan and Billy are inventors/mathematicians living in Silicon Valley and the Tropics. This home will be a place to live, work, and commune with friends. They described in detail how they intended to live in this place on this land 6-8 months of the year with their young adult children. They wanted a respite from their travels where they could re-center, recharge, reflect, and create in their family workshop and studio. Also, to gather with extended family and friends for various communal conversations, jam sessions, gardening, cooking, and ecstatic spiritual dancing, inspired by Dervishes and Shakers.

Located in Los Gatos, CA on 20 acres of land, the house is organized using a traditional courtyard scheme with a difference. Instead of it being a fortress, the exterior and interior perimeter walls are transparent and permeable, allowing the larger site, a small seasonal creek, and people to flow from the larger site through the building and into the courtyard. They imagined living on a terraced hillside with a single sloping roof plane overhead. The interior courtyard garden will be a mini organic farm.



los gatos house



hill house

los gatos



hill house

los gatos







hill house / los gatos

los gatos



craftsman / angelino heights

Our clients asked us to design them a home with an interior courtyard and separate art studio in the heart of a historic part of Los Angeles.

Our objective was to design an authentic architecture, compatible with the neighborhood, true to the principles of the local preservation plan, and keeping the craftsman aesthetic alive and vital in the present and into the future.

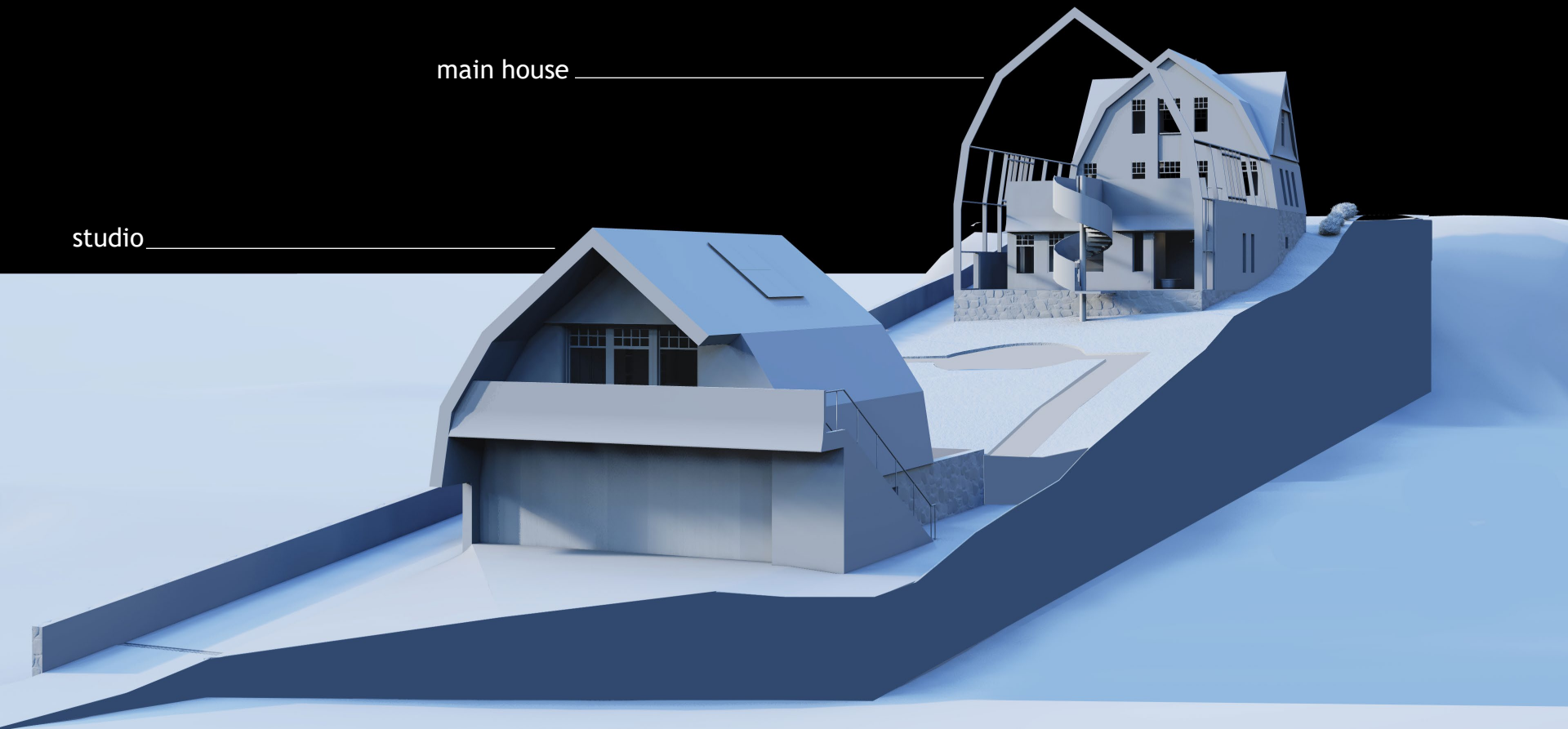
Alongside the clients, we sought to develop a concept that is respectful to its contributing neighbors while maintaining its own individuality and embodiment of both the historical style and style of the homeowners.



craftsman for C+S / angeleno heights



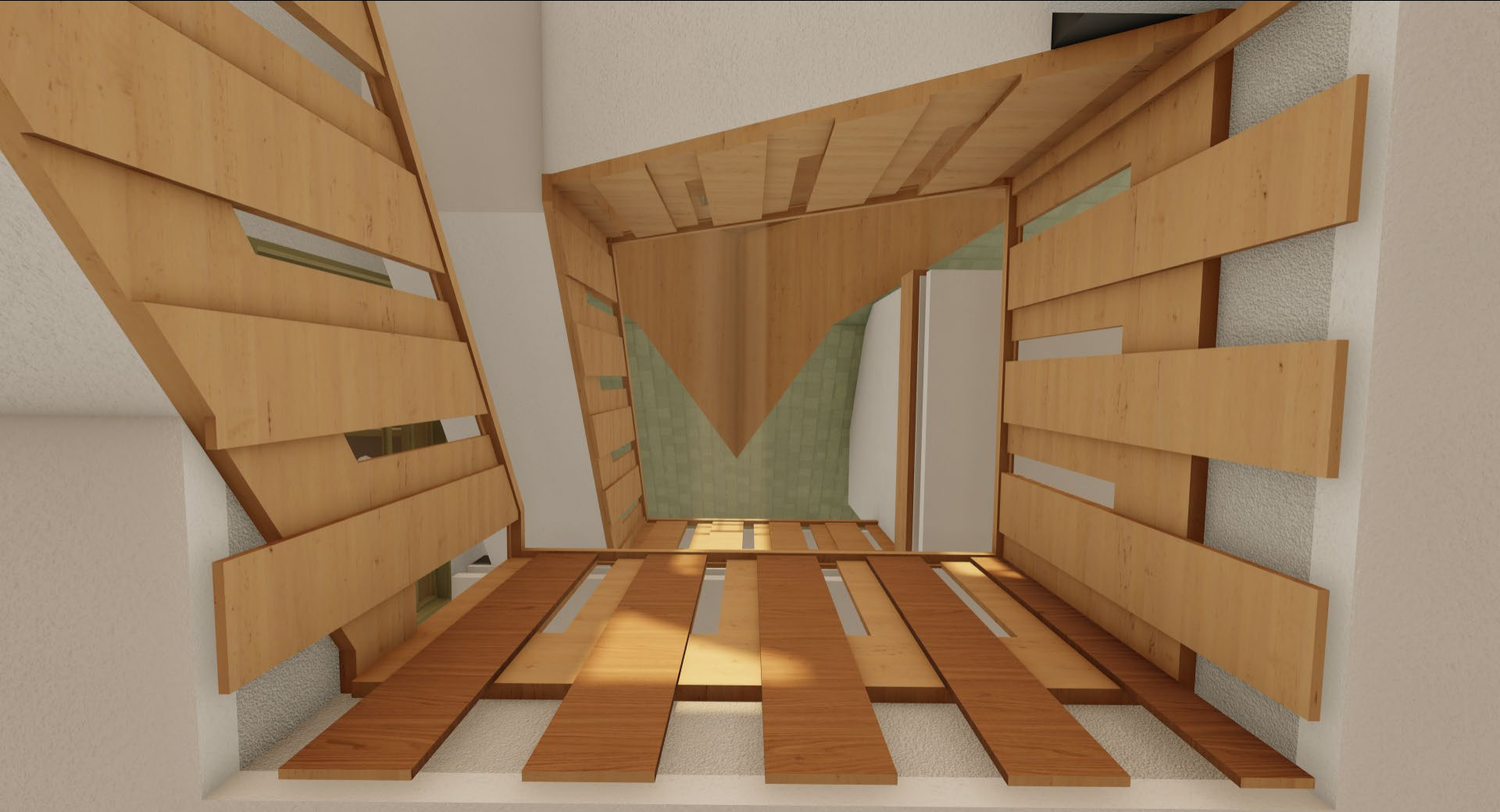
craftsman for C+S / angeleno heights



main house

studio

craftsman for C+S / angeleno heights



craftsman for C+S / angeleno heights

CLIFFSIDE HOUSE

A second home designed for a family with two active teenagers. They intend to be outdoors as much as indoors. They wanted a courtyard house with private zones for the parents and children with one large communal zone for the family.

"We spend a lot of time together as a family, when we are at our spring-summer houses, but still, we will all need our private zones, to work and re-center," the mother told us. "On this large piece of flat land, where should we place each of our zones?" This was an important question. We built temporary 2 level platforms, at three unique site locations, for the family to camp and experience the land, the climate, the views, and the spaces, prior to beginning concept design. They developed an intimate understanding of the site, realizing that they would live on the entire site, so the house had to allow fluid movement indoor and out.

The L-shaped house is situated to create two big outdoor areas. Three two-story pavilions, parallel to the street and ocean, are connected to each other by a bridge. One is for the children, one for the parents, and one, which extends back to the street, is for the whole family. The main entry gateway, at the street is connected to the living room entry at the second level, 200 feet towards the bluffs edge, will be accessed by a very long, wide, ramped roof, conceived as a dune with living shoreline dune

scape. Upon entering the house, the long dramatic views to Pt. Dume, the Santa Monica Mountains, Channel Islands, and downtown Los Angeles begin to unfold. "Also, we want the house to open up with drama, when we arrive on Memorial Day, and close down when we depart on Labor Day. This is reminiscent of my childhood," she said. Large sliding exterior wall sections will serve this purpose.



summer home / pt. dume

-what if a house on a flat site with a long view could feel like living on a hill?



cliffside





cliffside







cliffside



santa monica canyon house

A home for two writers that balances views and natural light with privacy, and includes two writing rooms and a film screening room.

A new two-story residence with a subterranean, two car garage with a storage basement will be built. The house will have three bedrooms, four and half baths, two writing rooms, a library, a great room, a kitchen/dining and a living/lounge area with lots of open patio spaces and accessible roof deck. The basement includes a large screening room and gym.

The clients requested an open floor plan with significant natural light, and views to the street, but enough privacy for each to focus on their work.



santa monica canyon house

residence for 2 screenwriters - east view



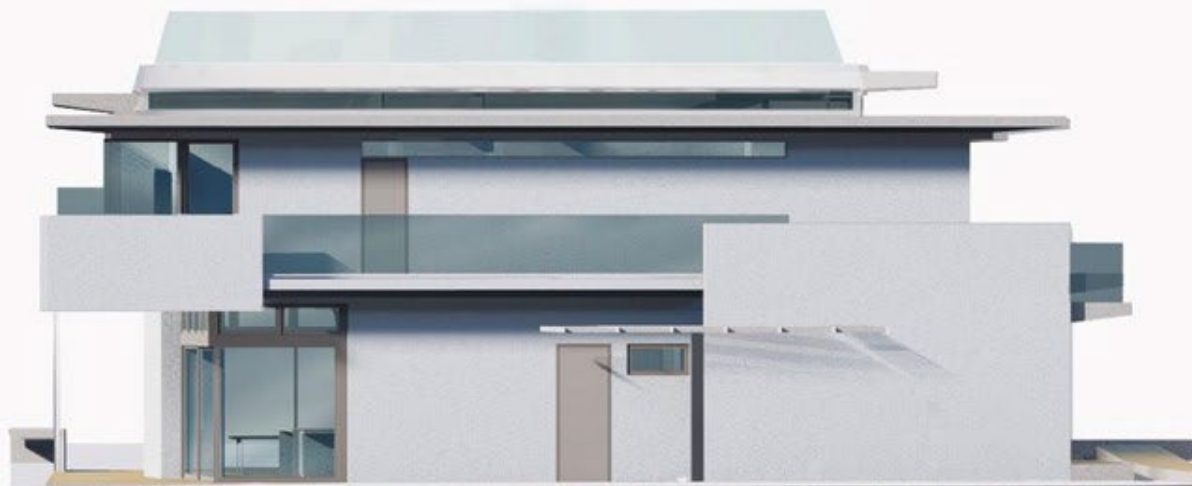
santa monica canyon house

residence for 2 screenwriters - west view



santa monica canyon house

residence for 2 screenwriters - north view



santa monica canyon house

residence for 2 screenwriters - south view

SUZHOU GARDEN VILLA

A contemporary interpretation of a traditional garden villa, created for family, friends, and certain colleagues to gather for conversation and reflection while immersed in nature.

We were asked to re-imagine the traditional Garden Villa, a place for conversation, reflection, and writing, for a resort in Suzhou. To begin we studied, in real time, the Master of the Nets Garden, which reflects the beauty of "Mountain and Water" gardens. This and other experiences in Suzhou, along with the study of Chinese Arts (music and scrolls) and Mythology, provided us with a basic knowledge and insight into the purpose and meaning of the Garden Villa and the fundamental planning and spatial relationships that 'choreograph' the life within.

It is one house in two main parts connected by a central canyon-like space. One side is for semi-public gatherings of friends and colleagues and the other is the family's private family gatherings. Ascending the three-story house begins at the entry in a subterranean elliptical oasis, with spatial limits, and continues thru the second level and a more expanded space from inside to the edge of the forest and finally the roof garden with a special pavilion for quietude and contemplation of an expanded long view to the mountains.



garden villa / suzhou



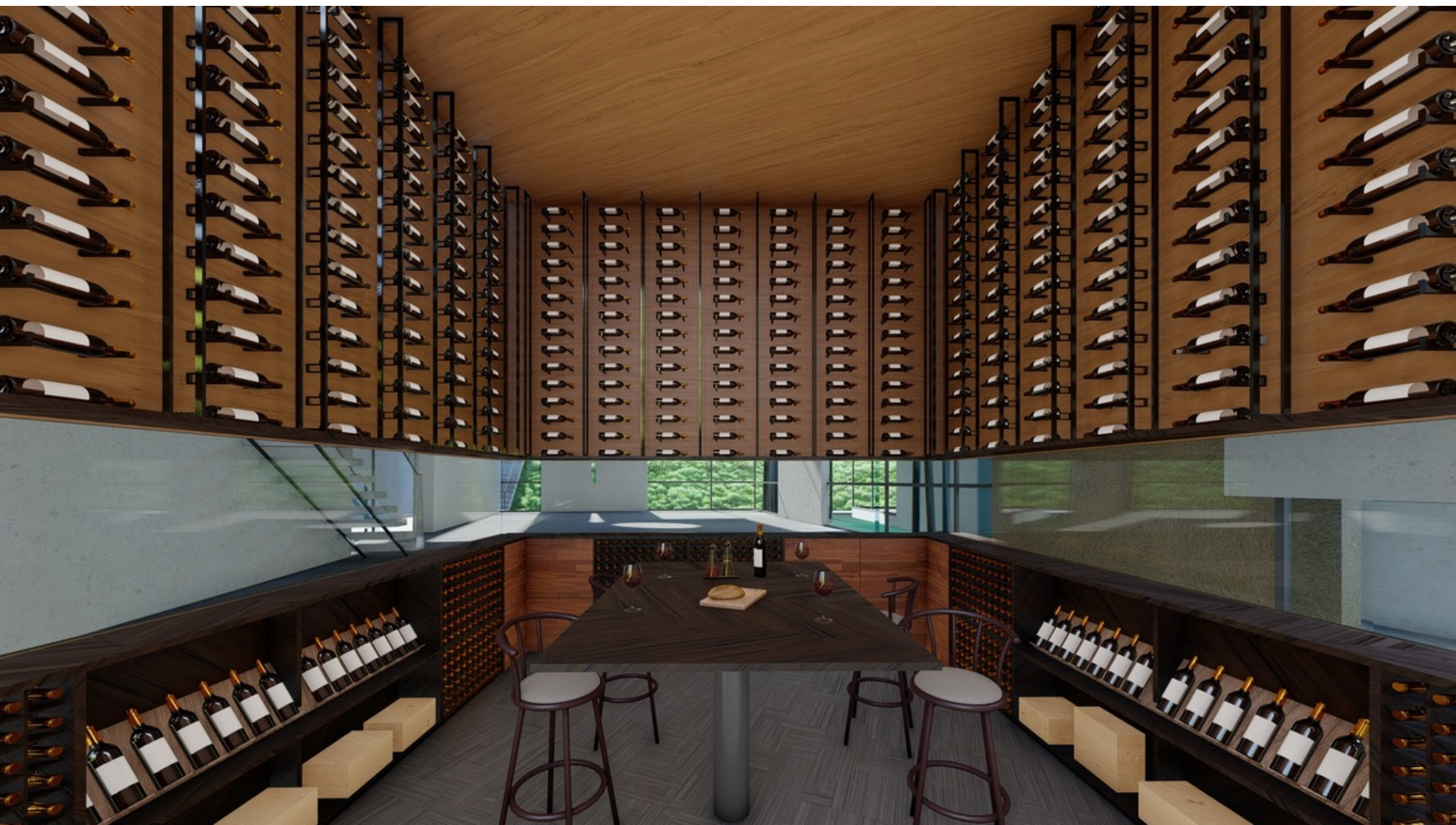
garden villa



garden villa



garden villa







garden villa