

VOGT COMMONS
LOUISVILLE, KENTUCKY

AN INCUBATOR FOR NEW WORKS IN
ARTS, HUMANITIES AND SCIENCES

VOGT CREATIVE COMMONS

Louisville, KY

Vogt Creative Commons is a post-industrial commons and a community for the integrated creative workforce sector.

R O T O
ARCHITECTS

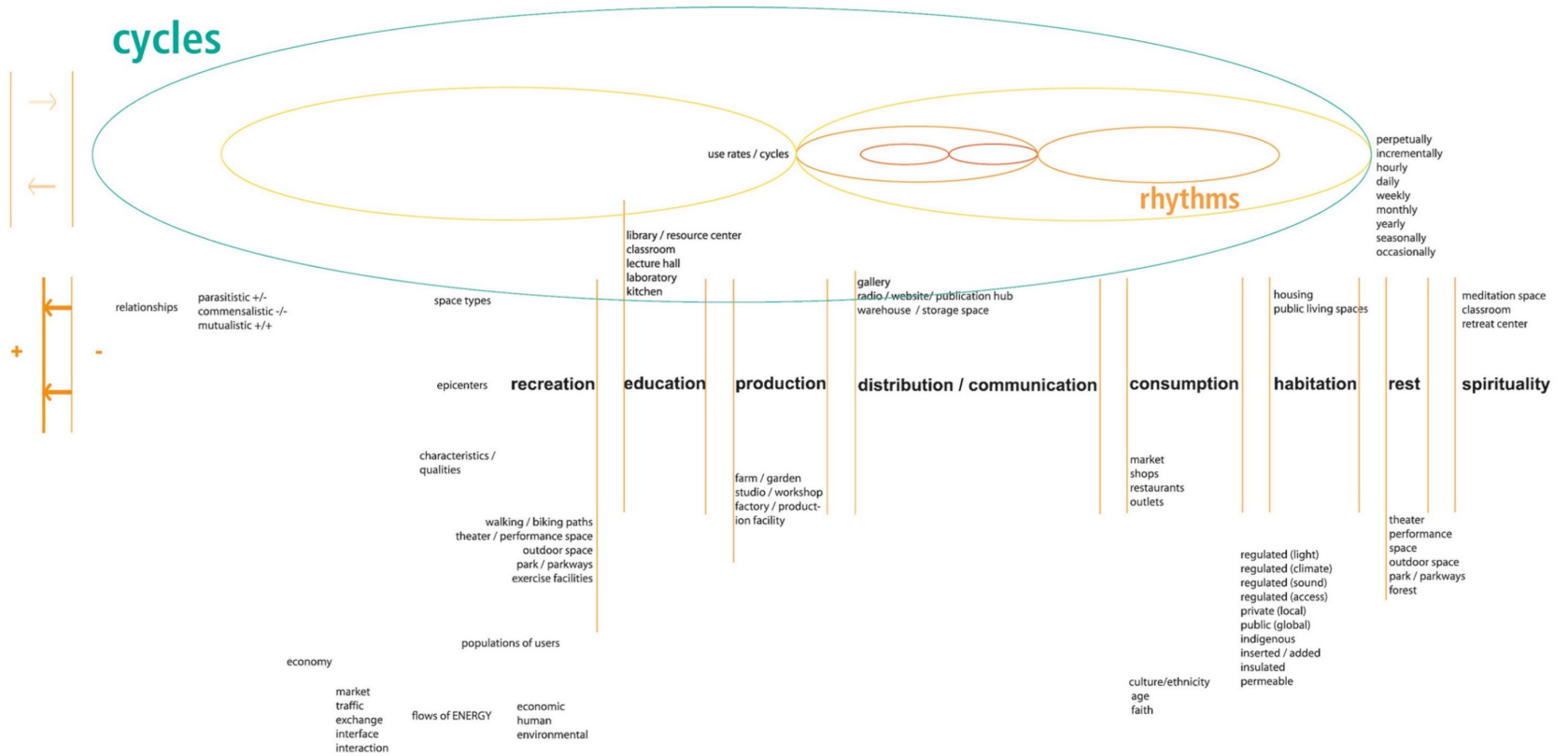
This existing 50-acre urban industrial site, at the geographical center of the metro-Louisville, will be transformed into an active part of the city for the first time, socially, culturally, and economically. A controlled access site will be completely permeable so the space of the city and its citizens can filter through. It will become an incubator city, a post-industrial commons, and a community for the integrated creative development of the Arts, Sciences, and Humanities, co-inhabiting with artisan-craft manufacturing and botanical research and organic agrarian housing. Civic Leadership of Louisville, a city of approximately one million, has constructed over many years, the full range of Arts and Culture Facilities and programs equal to many first-tier cities. What we discovered in our period of due diligence is there were no provisions for growing 'the next generation of Artists and Innovators.'

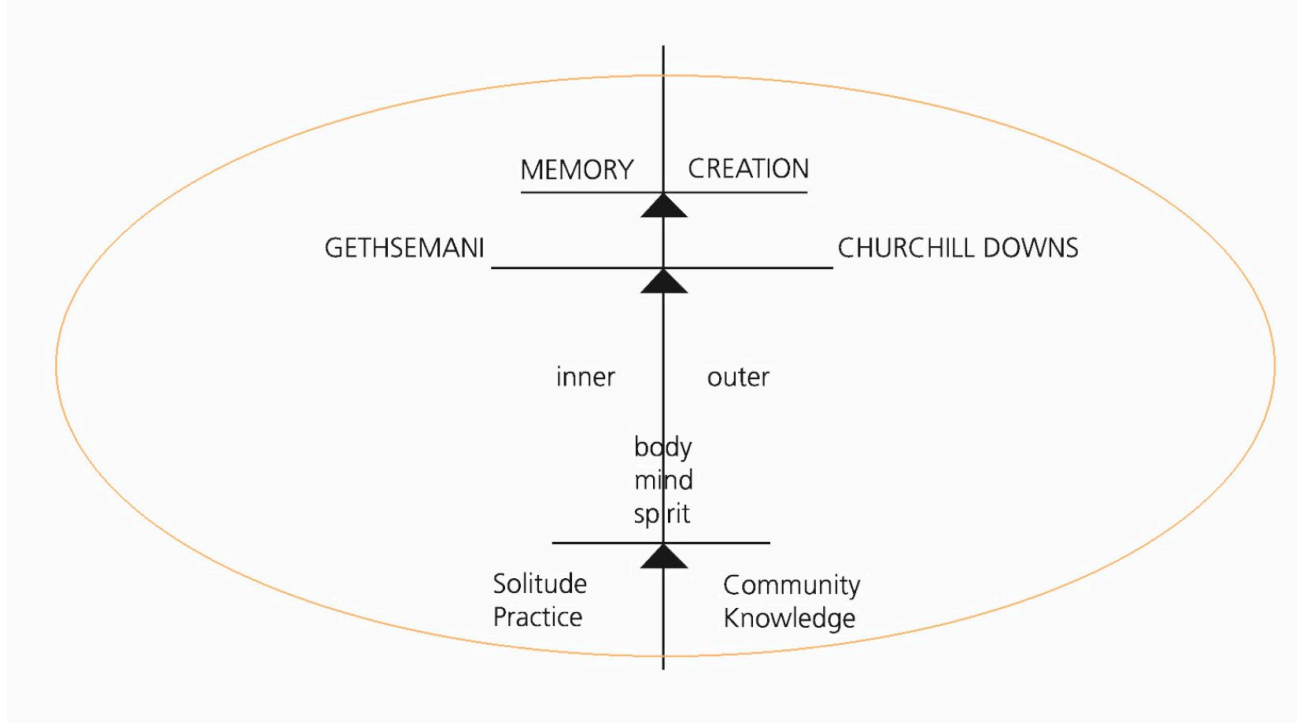
The core principles framing the vision of these civic leaders is that sometimes unstated but always implicit notion: a turn to the everyday will bring art and life closer together, arts and cultural production institutions are aspirational urban agents, and artists and innovators are a driving force for change.

VCC will be engaged in both pure and applied research under the umbrella of a public-private partnership between business, civic arts, government, and the Universities of Kentucky and Louisville. In contrast to the trends of demolition and erasure, the site, rich both in physical memory and cultural history, is being treated as an asset both to the neighborhood and to the city. Intentionally, projecting that this concept could serve as a prototype to other similar sites in Louisville and along the Ohio River, we addressed the post-industrial transition to knowledge and creativity 'industries' as the genesis for renewal and growth on an underutilized and undervalued urban site. This is a common problem for first and second tier urban-rural cities. In addition, we explored ways to address the urban-rural dialectic.



cycles





VOGT COMMONS

INTRO TO VOGT

KENTUCKY IS FAMOUS FOR THOROUGHBREDS/BOURBONS AND BASKETBALL. IT'S ECONOMIC FOUNDATION, WAS FROM EARLY 1900'S UP TO THE LATE 1980'S WAS INDUSTRIAL MANUFACTURING. THESE BUSINESSES HAVE MOVED TO OTHER PLACES IN THE COUNTRY AND WORLD LEAVING THESE LARGE INDUSTRIAL SITES WITHIN THE CITY UNDER UTILIZED OR EMPTY.

ROTO ARCHITECTS WAS ASKED TO CHOOSE A SITE PROPOSE A NEW USE AND STRATEGIES FOR REVITALIZING, RETURNING THEM TO THE CITY.

THE VOGT SITE IS CENTRALLY LOCATED, VERY CONNECTED, AND HAS THE LARGEST SITE AREA 60 ACRES WITH HIGH QUALITY BUILDINGS THAT ONLY COVER 50% OF THE SITE. IT HAS A SINGLE OWNER.

WORK

WHEN WE BEGAN, UNTIL NOW, WE HAVE HAD MANY MEETINGS WITH INDIVIDUALS, SMALL AND LARGE GROUPS, IN INFORMAL GATHERINGS AND FORMAL PUBLIC MEETINGS.

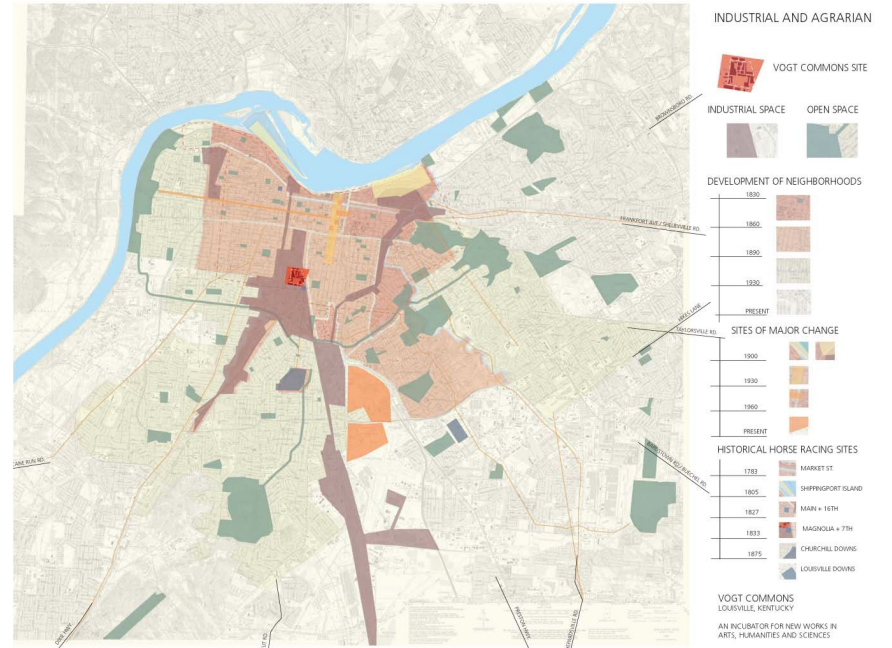
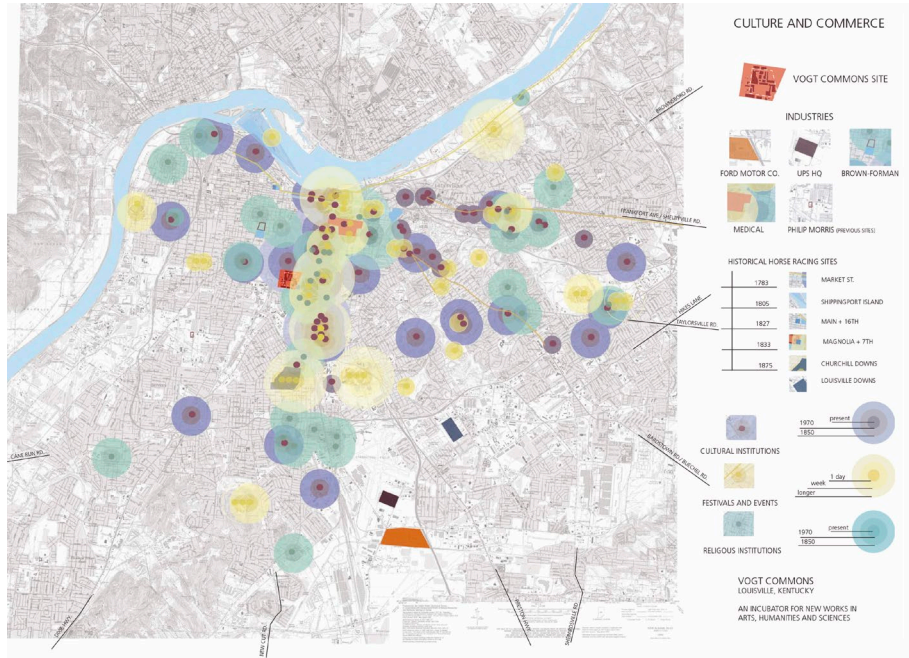
WE LISTENED AND RECORDED THOUGHTS, DISCUSSED OUR FINDINGS AND IMPRESSIONS AS WE FORMULATED VARIOUS STRATEGIES, SOCIAL, POLITICAL, PRACTICAL AND ECONOMIC. WE NOW HAVE A PROPOSAL THAT HAS BEEN ACCEPTED BY THE STAKEHOLDERS AND FUNDING IS IN PLACE. WAITING FOR THE FINAL DISCUSSIONS AND APPROVALS TO CONCLUDE.

NEW LIFE

GENERALLY, THE NEW LIFE OF THIS SITE WILL GROW OUT OF THE EXISTING STABLE ASSETS IN LOUISVILLE WHICH ARE THE ARTS, PERFORMING AND VISUAL, INTER-FAITH/HUMANITARIAN, SPORTS, HIGH-TECH MEDICAL RESEARCH, AND FARMING. THEY WILL HAVE A STATE OF THE ART INFRASTRUCTURE TO OPERATE LOCALLY YET HAVE AN INTERNATIONAL PRESENCE. THE ANCHORS WILL BE BOTH CULTURE (ARTS AND EDUCATION) AND COMMERCE (RESEARCH, PRODUCTION AND CONSUMPTION). BOTH WILL BE BALANCED.

VOGT COMMONS WILL HAVE THE SPACIAL, SOCIAL, AND TECHNOLOGICAL INFRASTRUCTURE TO SUPPORT AND ENCOURAGE WORK IN THE ARTS, HUMANITIES AND SCIENCES. IT WILL BE A PLACE FOR

EXPLORATION
DISCOVERY
INTERFACE
INTERACTION
EXCHANGE
INTERCULTURES
INTER ETHNICITIES
INTERFAITHS
INTERDISCIPLINES
INTERGENERATIONS
INTERECONOMICS
INTERDEPENDANCIES
INTERARCHITECTURE





DOWNTOWN CORE

SITE

UNIVERSITY OF LOUISVILLE

CHURCHIL DOWNS

LOUISVILLE AIRPORT

CONTEXT FLOW STUDY

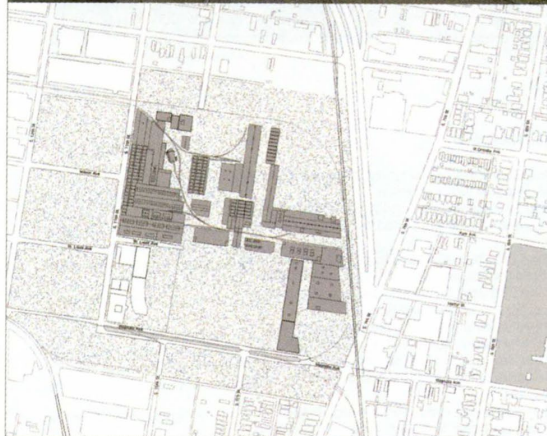
VOGT COMMONS
LOUISVILLE, KENTUCKY

AN INCUBATOR FOR NEW WORKS IN
ARTS, HUMANITIES AND SCIENCES

50-ACRE URBAN SITE



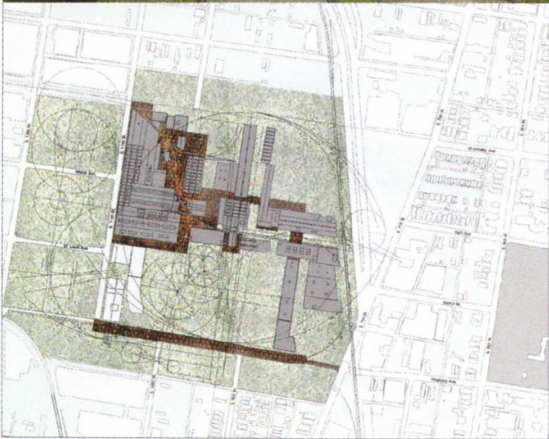




Site as is

Site Clean

Hydro Seeding

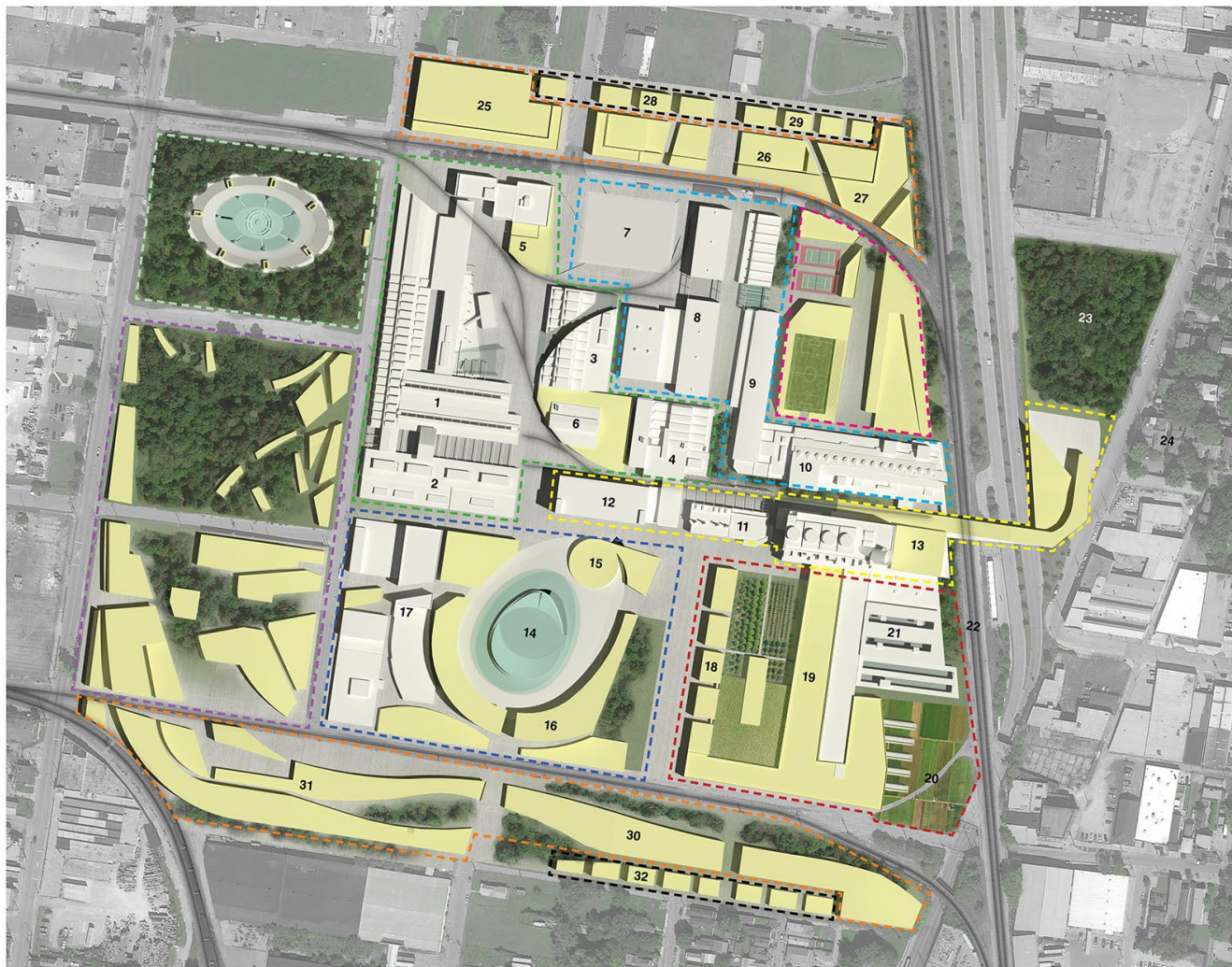


Infrastructure



ACTIVE

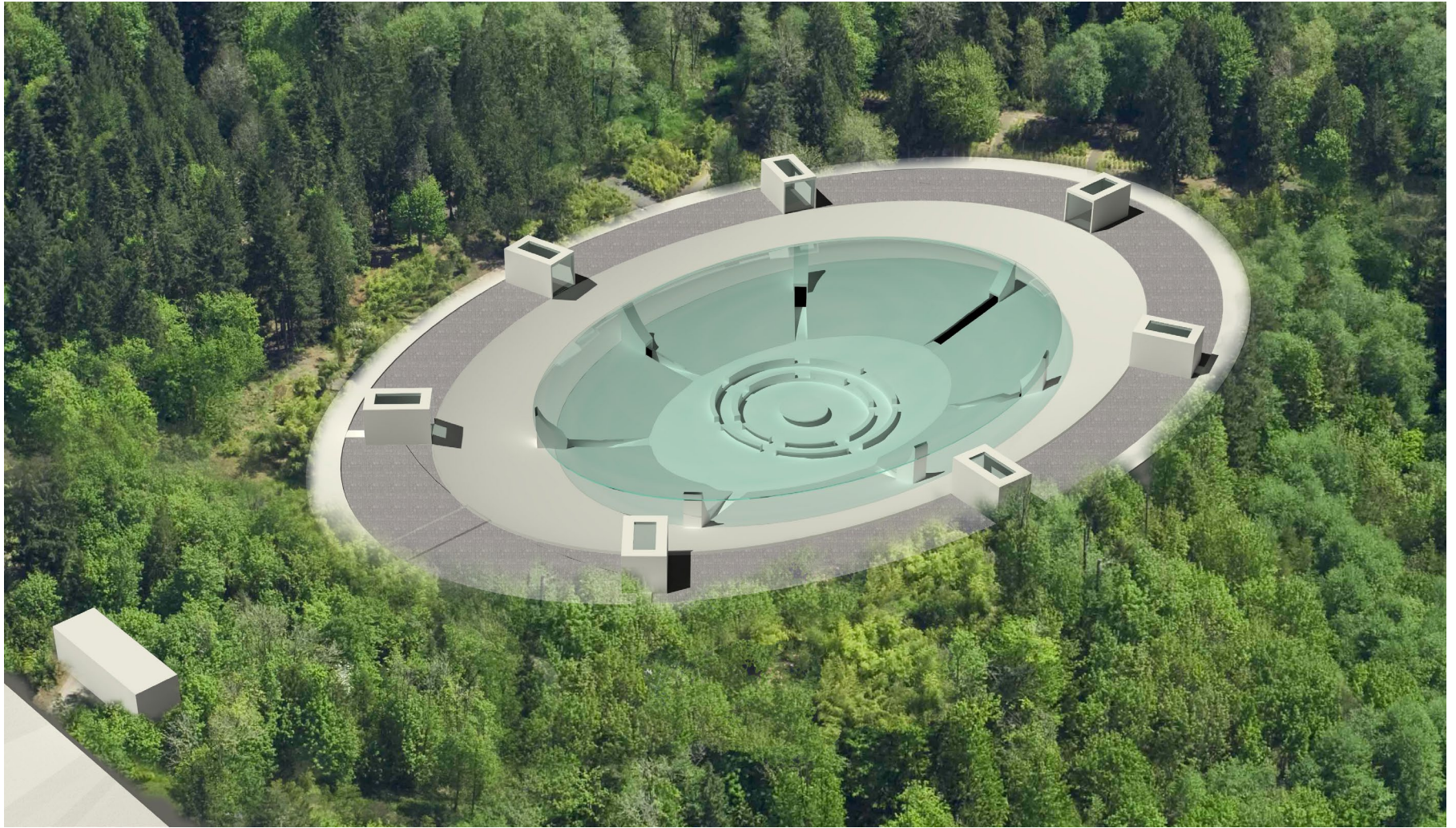


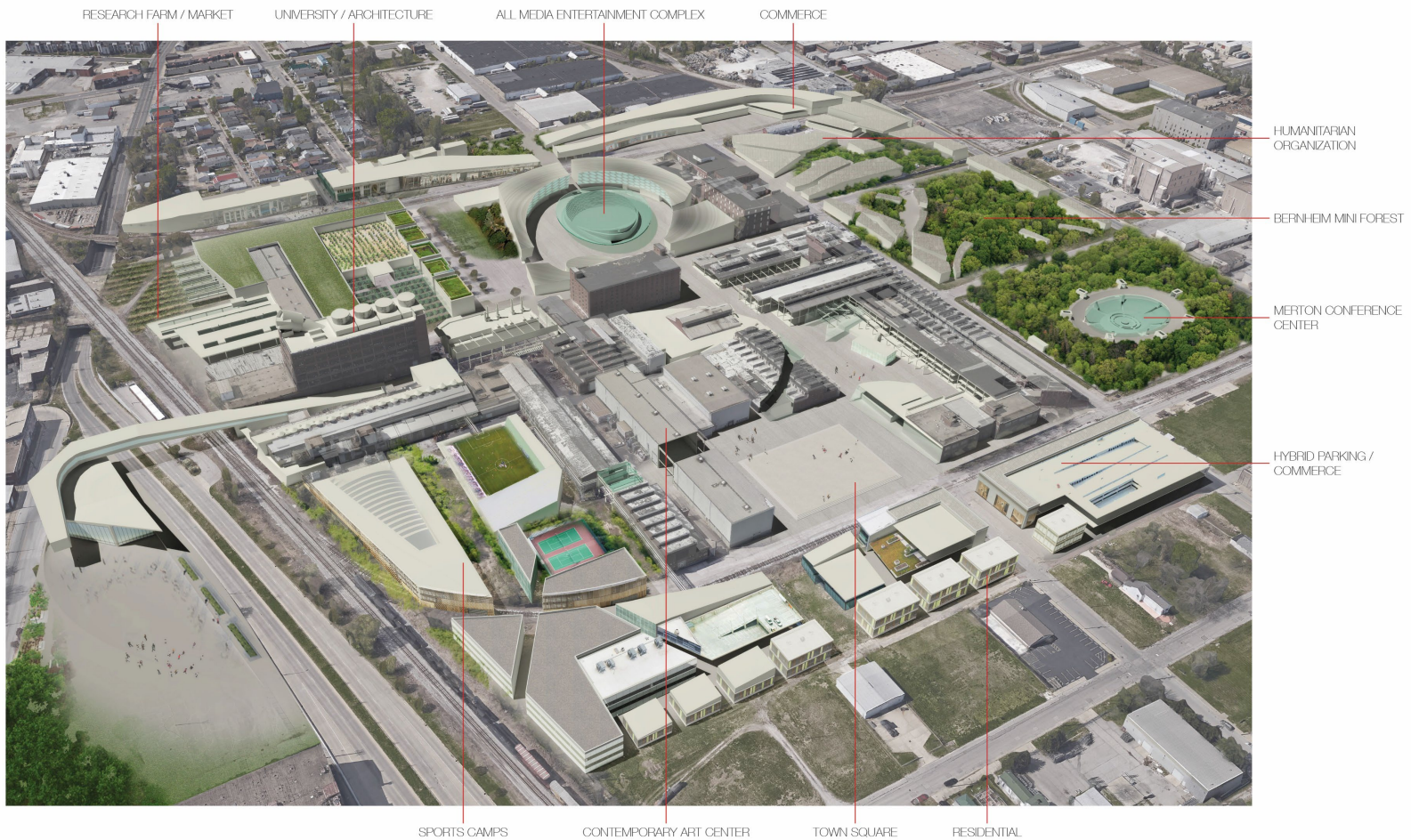


- EXISTING BUILDING
- NEW CONSTRUCTION

- LIVE WORKSHOPS
- ARTS DISTRICT
- SPORTS CAMPS
- CULTURAL CORRIDOR
- MEDIA COMPLEX
- MERTON CONFERENCE CENTER
- HUMANITARIAN ORGANIZATION
- COMMERCIAL
- RESIDENTIAL
- RESEARCH / FARM / MARKET

- 1 LIVE / WORKSHOPS
- 2 LIVE / WORKSHOPS / MANUFACTURE
- 3 PUBLIC ASSEMBLY CENTER
- 4 WORKSHOPS
- 5 STORE
- 6 RESTAURANT
- 7 TOWN SQUARE
- 8 CONTEMPORARY ART CENTER
- 9 LIVE / WORKSHOPS
- 10 WORKSHOPS / COMMERCE
- 11 TECH SUPPORT
- 12 MEETING ROOMS / ARCHIVE / LIBRARY
- 13 UNIVERSITY / ARCHITECTURE
- 14 THEATER
- 15 THEATER CHAPEL
- 16 THEATER SUPPORT
- 17 OFFICES / ART ORGANIZATIONS
- 18 LABORATORIES
- 19 BOTANY RESEARCH INSTITUTE
- 20 RESEARCH FARM
- 21 MARKET
- 22 FREIGHT TRAIN
- 23 FOREST
- 24 OLD LOUISVILLE DISTRICT
- 25 HYBRID PARKING / COMMERCE
- 26 LIVE / WORKSHOPS
- 27 COMMERCE
- 28 MULTIFAMILY HOUSING
- 29 STUDENT HOUSING
- 30 COMMERCE
- 31 LIGHT MANUFACTURE
- 32 STUDENT HOUSING





VOGT COMMONS
LOUISVILLE, KENTUCKY



R o T o Architects
600 Moulton Avenue
Suite 405
Los Angeles, California 90031

rotoark.com